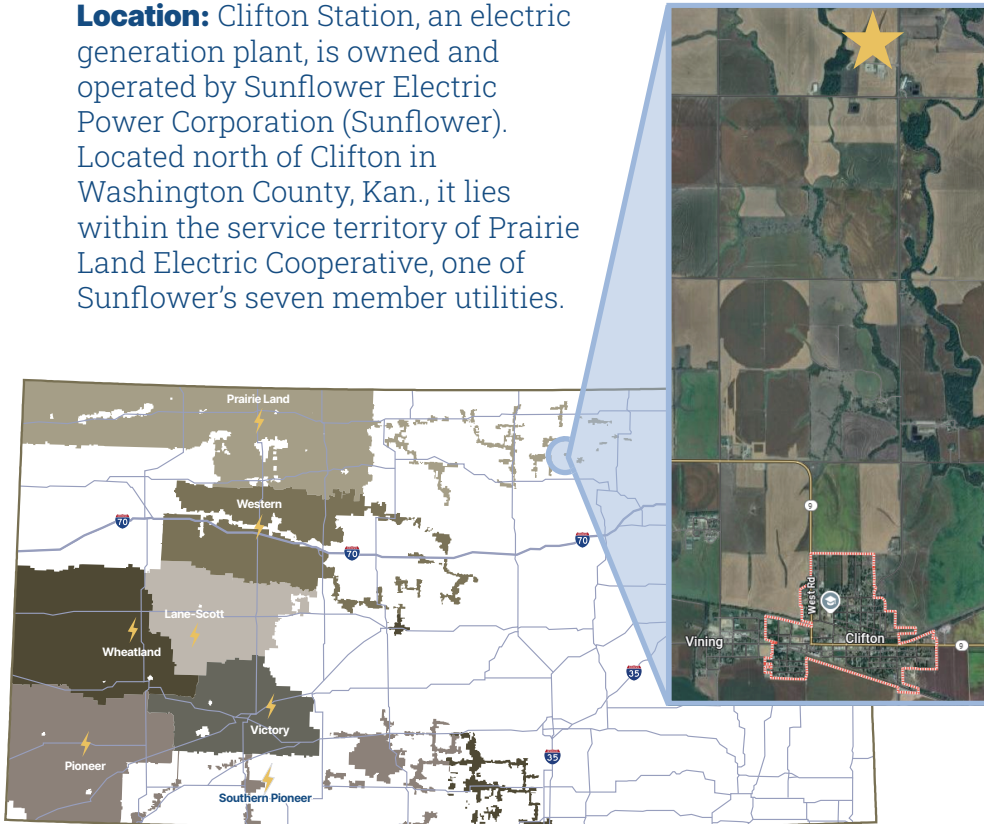


CLIFTON REPLACEMENT PROJECT

Location: Clifton Station, an electric generation plant, is owned and operated by Sunflower Electric Power Corporation (Sunflower). Located north of Clifton in Washington County, Kan., it lies within the service territory of Prairie Land Electric Cooperative, one of Sunflower's seven member utilities.



TIMELINE

- Major equipment ordered
March 2025
- Engineering and procurement
Mid 2025 – Mid 2027
- Ground survey
Fall 2025
- Engineering, procurement and construction contract signed
Spring 2026
- Construction begins
September 2026
- Turbines arrive on site
Spring 2027
- Construction ends
Early 2028
- Commissioning
Spring 2028
- Commercial operation
Summer 2028

Project Purpose: Clifton 1 is a Westinghouse 501 combustion turbine that began commercial operation in 1974. After operating for more than 50 years, it's reached the end of its useful life. Sunflower plans to replace Clifton 1 with new gas-fired combustion turbines. The combined capacity of the new turbines will fully utilize the existing 97.6 MW of interconnection service granted to Sunflower by Southwest Power Pool (SPP) at the point where Clifton Station interconnects to the grid.

Technology: Sunflower plans to install three, 33-MW Titan 350 turbine generators, the newest turbine model offered by Solar Turbines. These world-class, highly efficient natural gas turbines are well suited for flexible power.

Sunflower is working closely with local, state and federal agencies to review existing permits and ensure compliance with all applicable regulations. The new units are projected to be significantly more efficient with a heat rate of 9,000 Btu/kWh compared to the Clifton 1 heat rate of 13,100 Btu/kWh. Water use is expected to remain the same.

Energy Reliability: Replacing Clifton 1 will help Sunflower meet reliability requirements set by SPP, the regional transmission organization responsible for managing the electric grid in the central U.S. The new units will have less maintenance downtime and outages while providing dependable, dispatchable power for Sunflower's seven member utilities in central and western Kansas.





Sunflower Electric Power Corporation is a wholesale electric generation and transmission utility headquartered in Hays, Kan. Sunflower is governed by six distribution electric cooperatives and one wholly owned subsidiary. Together, these members serve communities in 58 counties across central and western Kansas. Generation assets like Clifton Station play an important role in Sunflower’s commitment to serving the needs of our members and their rural Kansas communities by providing affordable, reliable wholesale power.

OUR MEMBERS



Economic and Community Impacts: Sunflower understands large construction projects can bring both anticipation and concern to local communities, and we are committed to transparency, thoughtful planning, and collaboration throughout the replacement of Clifton 1. Construction will occur on five acres next to the existing Clifton 1 footprint on land already owned by Sunflower, which is currently leased to a local farmer.

At the peak of construction, nearly 120 contractors are expected to be on-site. These individuals will be housed in surrounding communities, and Sunflower is actively coordinating with local economic development organizations and city and county officials to help communities prepare for and benefit from the increased activity. This project offers short-term and long-term opportunities for nearby communities—including Clifton, Clyde, Concordia, and Clay Center—through increased demand for goods and services at restaurants, grocery stores, gas stations, hotels, rental properties, campgrounds, and more.

Project Partners: Sunflower is proud to partner with respected organizations on this project. These partnerships ensure a high level of quality, safety, and accountability throughout the project.

- **Solar Turbines**
Turbine manufacturer
- **Black & Veatch**
Owner’s engineer
- **Frank Lill & Son**
Engineering, procurement, and construction (EPC) contractor
- **Trinity Consultants**
Environmental consultant
- **Local union labor for construction**

While the project is expected to bring meaningful economic benefits, Sunflower recognizes it may also impact daily routines. We are committed to minimizing disruptions as much as possible. Increased traffic near Clifton Station is expected, particularly during peak construction periods. While we do not anticipate needing to modify the existing entryway to the site, any necessary changes will be coordinated closely with Washington County and/or the Kansas Department of Transportation to ensure public safety.

Upon completion, Sunflower anticipates staffing the facility with two full-time employees to operate the new generation units, creating additional local job opportunities and reinforcing our long-term commitment to the region. We value our relationship with the community and look forward to working together to ensure a smooth construction process and a stronger energy future.



PROJECT CONTACT

Kim Harp
Project Lead
620.277.4555
kim.harp@sunflower.net

MEDIA INQUIRIES

corporatecommunications@sunflower.net

PROJECT WEBSITE

<https://bit.ly/4rNH6MT>

